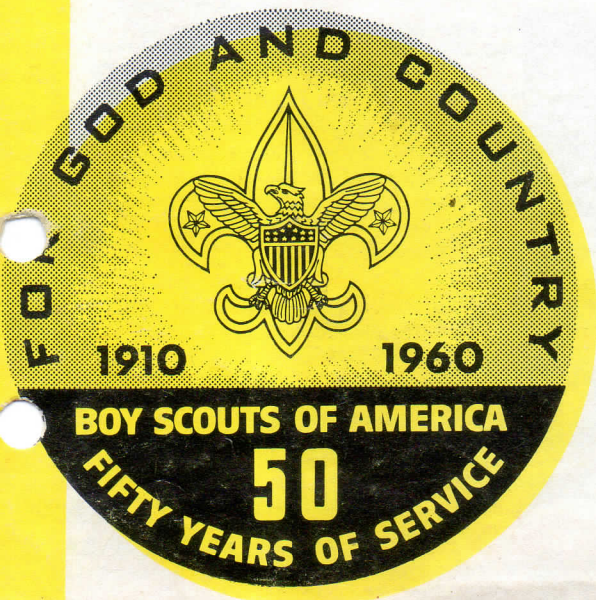
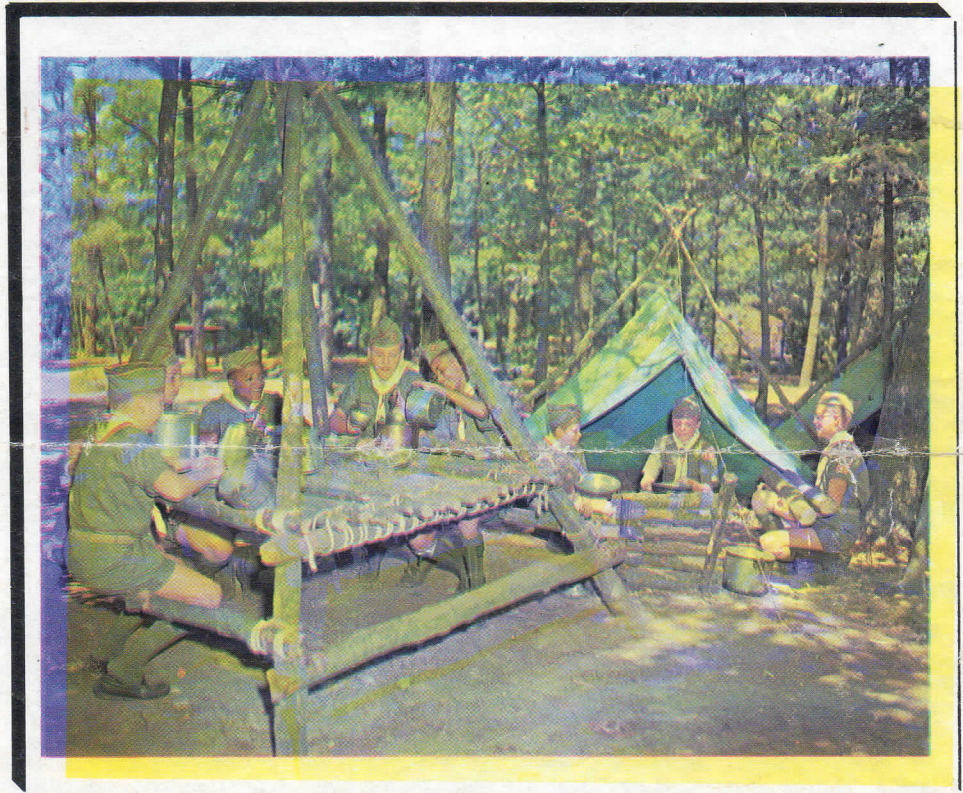


Golden Jubilee

CAMPING



NASSAU COUNTY COUNCIL
BOY SCOUTS OF AMERICA

SHELTER ROCK ROAD
ROSLYN, NEW YORK

Camp Wauwepex

Camp Wauwepex, located at Wading River, Long Island, is one of the Country's finest Boy Scout Camps. In 1960 it will celebrate its 38th year of operation. Through all these years, the physical facilities of the Camp have been constantly improved and expanded. The Camp now accommodates 1050 campers at a time, in 3 divisions of 350 Scouts and Leaders. Each Division has its own modern well-equipped Dining Hall, as well as swimming, Scoutcraft and activity areas. Troops plan and execute their camp program with the assistance of a trained Camp Staff. The combination at Camp Wauwepex of unequalled facilities, trained leadership and 630 acres of scenic and natural beauty, provide for every Scout, a camping experience long to be remembered.

CAMP PROGRAM

Natural surroundings at Wauwepex stimulate a real Scout Camping Program, with a major emphasis on Scouting skills and advancement. A beautiful natural fresh water lake provides for all phases of aquatics, canoeing, boating, fishing, as well as swimming and life-saving. The Camp also provides facilities and trained leadership in hiking, nature study, cooking, archery, riflery and small boat handling. An outstanding feature of Camp Wauwepex over the years has been the opportunities extended to all campers through the guidance and assistance in each of these fields by a competent well trained Camp Staff. While emphasis is placed on the program of the Troop and the assistance and training of its own leaders in carrying out their own program, it is also possible for individual Scouts to attend Camp as a member of a Provisional Troop under Camp Staff supervision. Scouts may register for Provisional camping in addition to attending camp as a member of their own troop.

MEALS

Meals at Camp Wauwepex are well balanced, prepared by professional chefs and served in quantities to satisfy the growing Scout. Meals are prepared in three modern equipped kitchens. Dishes are washed and sterilized by the finest automatic equipment. In the interest of promoting Patrol and Troop organization and operation, as well as training in the skill of cooking, one day each week will be programed for Unit cooking. It is advisable for Units to bring Patrol Cook Kits to camp.

VISITORS

Visitors are welcome in Camp on Sundays during the hours of 10 A.M. to 9 P.M. Visitors are also permitted to attend the Ceremonial Campfire held on the middle Saturday evening of each period. Camp will be open to visitors on Saturday immediately following the rest period at 2:30 P.M. until 10 P.M. Visitors will be permitted in Camp at only the above named times.

CAMP FEES

The majority of Scouts attend Camp as members of their own Troop, and are covered by reservations made by the Troop in November by the payment of a \$10.00 fee. This fee is applicable to the camping fees of the Troop, but is not refundable in the event of cancellation of the Troop reservation. Troop reservations must be "covered" by an individual application and \$5.00 reservation fee from each Scout prior to April 1, 1960. This fee is not refundable but is transferable upon submission of a new application. The \$5.00 deposit will apply toward the total Troop camping fee of \$39.00 per Scout per period. Scouts who cannot attend Camp with their own Troop or who wish to remain for additional periods, may do so as members of a Camp Provisional Troop, under a competent Camp Staff Scoutmaster. Applications for Provisional camping will be accepted at the Council Office on a first come basis on or after February 15, 1960. Application must be accompanied by a \$5.00 reservation fee which is not refundable. This deposit will be credited toward the total Provisional fee of \$46.00 per Scout per period. Balance of Camp fees are due in the Council Office on or before June 1, 1960.

CAMP PERIOD

Camp Wauwepex will operate for four, two-week periods as follows:

July 3 — July 16
July 17 — July 30

July 31 — Aug. 13
Aug. 14 — Aug. 27

Camp periods open at 5 P.M. on Sunday and close at 1 P.M. on Saturday. It is imperative that all Scouts, except those remaining for additional periods, leave Camp following the noon meal on Saturday. Troops may check in at any time on the opening day of the period. However, the first meal served is the Sunday evening meal.

REGISTRATION

Register now for Camp Wauwepex by filling out the enclosed blue application and submitting it to the Scoutmaster, together with the \$5.00 reservation fee. Scouts registering for Provisional camping should submit their reservation card, together with a \$5.00 reservation fee for each period desired, to the Council Office on or after February 15, 1960.



LOCATION AND MAIL

Camp Wauwepex is located on Manorville Road between Route 25 and 25A, near the village of Wading River, Long Island. Mail for Scouts should be addressed:

Scout
(NAME)

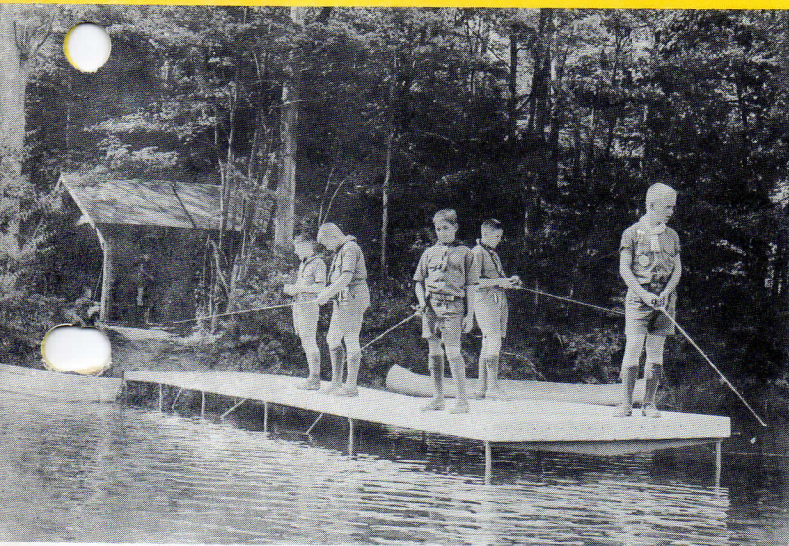
Campsite Name

Troop No.

Camp Wauwepex
Wading River, L. I., N. Y.

**ADDITIONAL WAUWEPEX
INFORMATION ON BACK**

JUBILEE CAMPING YEAR



Onteora Scout Reservation

The Onteora Scout Reservation, located in the Catskills, offers 2400 acres of unexcelled natural beauty. Rolling hills, a beautiful lake, woodland streams and miles of trails winding through hardwood forests, invite the Scout to participate in the ultimate in Scout Camping. Camp programs are planned by each Troop, under the leadership of the Unit, assisted by a well-trained and capable Camp Staff. The Camp Staff provides counseling in all out of door Merit Badges.

Provisional Camping is available at Onteora only in the Junior Leader Training program, the Camp Staff Training Camp and the various Explorer Camp programs.

ONTEORA FACILITIES

In addition to its superb natural beauty, Onteora provides many physical features to aid and strengthen the program of the Troop and its Patrols. Food Service is provided by two "Food Service Buildings." Each of these buildings provide Dining Hall service, Heater Stack service to Unit Campsites, and a Country Store to supply food for meals prepared by the Unit. The Camp in 1960 will provide 35 Campsites, comprised of lean-tos or tents and platforms. Each site is equipped with Patrol cooking and dining areas. In addition the Camp provides three Chapels, canoeing and boating facilities, fishing dock and fly-tying shelter, three swimming areas and field sports areas.

CAMP PROGRAM

The Camp Program at Onteora is planned and administered by the Troop and its Patrols, assisted by the Camp Staff and specially the Program Commissioners. Every emphasis is placed upon strengthening the Unit Program with camp-wide planned or conducted programs being scheduled only as requested by the Troops in Camp. This freedom of Unit Program, together with the natural wilderness surroundings, stimulate a real Scout camping experience, and its resultant Scouting advancement. All camping at Onteora takes place as a part of the Troop Program, under the Troop's own leadership except in the training programs listed on the opposite page. While the camp provides trail tents and patrol cook kits in limited quantity it will be most helpful if troops will bring additional to help insure adequate supply.

MEALS

In keeping with the established policy, every Unit must cook at least one meal per day while in Camp. Thus providing training in the skills of camping, but even more important, the building of Patrol and Troop cooperation by planning and working together. Meals supplied through the Food Service Building are prepared by professional chefs using the finest equipment available. Special equipment insures the delivery of hot meals to the campsite when desired by the Troop. All meals are well balanced served in generous quantities to satisfy every Scout.

CAMP FEES

All Units camping at Onteora will pay a reservation fee of \$10.00 which is applicable to the camping fees of the Troop. This fee is not refundable in the event of cancellation of the Troop reservation.

Units may choose one of three plans of food service with fees as follows:

Plan 1—Units furnish all of their own food and prepare all of their own meals. Raw food may be purchased from the "Country Store" in camp.

Fee — \$12.00 per Scout per two week period.

Plan 2—Units will provide food and cook two meals per day. The main hot meal will be served to the Unit in the Dining Hall, or to the campsite as desired.

Fee — \$26.00 per Scout per two week period.

Plan 3—Units will supply and cook one meal per day. Lunch and dinner will be served by the camp.

Fee — \$34.00 per Scout per two week period.

All Troop camping reservations must be verified as to the number of campers by an individual application and a \$5.00 reservation fee from each Scout on or before April 1, 1960. This fee is not refundable, but is transferable upon submission of a new application. This \$5.00 deposit will apply toward the total camping fee as listed above. Total camp fees must be paid at the Council Office not later than June 1, 1960.

Fees for special Training opportunities and Explorer Expeditions are listed with details of programs.

CAMP PERIODS

The Onteora Scout Reservation will operate for 4, two week periods as follows:

July 2 — July 16

July 16 — July 30

July 30 — Aug. 13

Aug. 13 — Aug. 27

LOCATION AND MAIL

The Onteora Scout Reservation is located in Sullivan County, 8 miles north of the village of Livingston Manor, N. Y. It may be reached by car using the New York State Thruway to Harriman, Exit 16 to Route 17 to Livingston Manor. Turn right off Route 17. Signs indicate the way to camp.

Mail for a Scout in camp should be addressed:

Scout

Campsite

Troop No.

Onteora Scout Reservation, Livingston Manor, New York

Additional Jubilee Camping Opportunity

JUNIOR LEADER TRAINING AT ONTEORA

A new program is being offered at Onteora for the first time in 1960. This will be a full two week Junior Leader Training program, designed to train all Troop Junior Leaders in the most approved methods of Troop Operation under an excellent adult staff.

The program is open to all Troop Junior Leaders with no restrictions as to age or rank. Scouts register by filling out the application card and submitting it to the Council Office, together with a \$5.00 reservation fee on or after Feb. 15, 1960. (Reservation fee not refundable). Total fee for Junior Leader Training Camp is \$46.00 per period. (Balance of \$41.00 due on or before June 1, 1960)

Participation in this program will prove most beneficial to the individual Scout and to the Unit to which he gives leadership. In order that he may use his training to the fullest, it is recommended that he attend the Junior Leader Training Camp prior to the attendance of his Troop at Camp Wauwepex or Onteora during the summer. Scouts may register for any of the periods listed below:

Round Trip bus transportation is available to Onteora at \$6.00 per person. Complete details will be furnished each Scout at time of registration for the Junior Leader Training Camp.

DATES

July 2 — July 16

July 16 — July 30

July 30 — Aug. 13

Aug. 13 — Aug. 27

Jubilee Camporees

1960 will be a year of spectacular Scouting events in commemoration of our Golden Jubilee. Highlighting these events locally will be the Jubilee Camporees. These Camporees will be held in every District of the Nassau County Council on the weekend of June 3-4-5, affording every Scout of our Council the opportunity to participate in this great Jubilee event and to wear the Jubilee Camporee Emblem. Every Scout Troop should set aside these dates for participation in great Jubilee Camping experience.

Jubilee Exploring

1960, our Golden Jubilee will bring some great new opportunities for adventure to all Explorers and Scouts registered in Troops over 14 years of age.

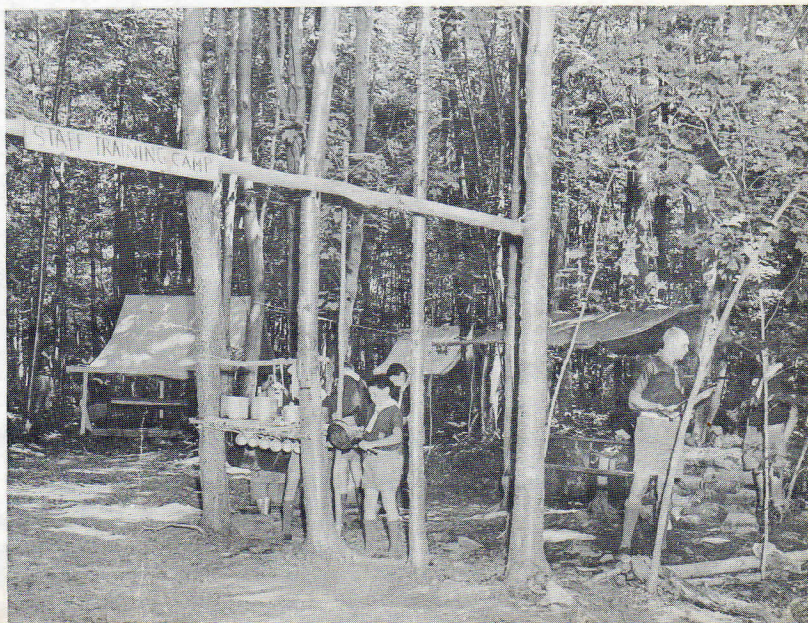
Highlighting all of these experiences, of course, is the National Jamboree being held at Colorado Springs during July. However, in this folder we will only attempt to cover the programs conducted by the Nassau County Council, and using the Onteora Scout Reservation as a base camp.

The base camp at Onteora has been moved to a new and more adaptable location. This new location will make possible the serving of two meals a day, prepared in a central kitchen and delivered to the Explorer Base in vacuum containers. The Explorers will prepare one meal per day. Also improved by the new camp, will be the opportunity for swimming and canoeing instruction, as well as instruction and counselling in all out-door Merit Badges.

The Explorer program will be operated independently of the Boy Scout Camp but utilizing all of the vast wilderness camping areas that only Onteora can provide, thousands of acres of unbroken woodland in and adjacent to the camp, miles of some of the best trout fishing streams in the state, all types of wild life, canoeing on the Delaware River, as well as the Fulton Chain of Lakes, horseback riding over woodland trails and unlimited opportunities for hiking and real wilderness camping.

Here at Onteora are all the Explorer programs you ever dreamed of, all available to you. Also as added features, the opportunity for training and qualification in the Hunter Training Program, as well as the new Small Boat Handling Training, now required by law.

Reservations for all phases of the Explorer program will be accepted on or after February 15, 1960. Use the red application card and submit with a \$5.00 deposit to reserve your place for the greatest experience in 1960.



Explorer Camping



EXPLORER BASE CAMP

Explorers registering for the Base Camp will have the opportunity for Merit Badge counseling, canoe trips on the Delaware River, mountain climbing, trips, hikes to the Fish Hatchery, Mongaup and other points of interest in the area. A highlight of the program will be a 3-day horseback trip to our newest camp at Alder Lake.

The camp fee of \$46.00 covers all meals and program costs. Camp periods as follows:

July 2 — July 16

July 16 — July 30

July 30 — Aug. 13

Aug. 13 — Aug. 27

Explorer Units, under their own leadership may participate in the Explorer Base program for less than the full period if desired. Posts interested in participating in the program for a minimum of 5 days are requested to contact the Council Office for complete information and dates available.

CAMP STAFF TRAINING CAMP

A program which will appeal to every Explorer with the desire to serve on either the Wauwepex or Onteora Camp Staffs, will be the Camp Staff Training Camp. Participation in this program will be limited to selected Explorers. Program for the two week period will be designed to train the Explorer for Camp Staff positions. In addition to general Staff Training, the Explorer will have the opportunity for specialized training in either Waterfront, Scoutcraft or Field Sports. While at least half of the time will be devoted to Staff Training, there will also be included many of the activities of the regular Explorer Base, such as short canoe trips, trail trips, and socials.

Careful guidance and appraisal will be given each participant in the Staff Training program so that future camp staff positions for both Wauwepex and Onteora may be filled from qualified trained participants in the program. Vacancies occurring during the summer at either camp will also be filled from the training camp whenever possible.

FEE — \$46.00 per 2 week period

Same Periods as Regular Base Camp

HORSE BACK RIDING

Horseback riding is offered to all participants in the Explorer program. The opportunity for training in horsemanship, the the Horsemanship Merit Badge, as well as trail trips under skilled leadership, will be available to Explorers at \$1.00 per hour. The extended horseback trip to Alder Lake is included in the Explorer Base Camp fee.

OUT OF CAMP EXPLORER EXPEDITIONS

The Explorer Base Camp at Onteora will also serve as the training and outfitting base for six out of Camp trips. Each trip will be limited to 16 Explorers.

The total fee for each trip will be \$49.00 for the complete 2 weeks. This fee will include all food, transportation and equipment, with the exception of personal equipment.

Each trip will include a training period in preparation for the trip.

Each trip will be under the leadership of a highly qualified Scouter of the Nassau County Council.

Expedition No. 1—Adirondack Lakes Canoe Trip. Date—July 2 — July 16.

Expedition No. 2—Appalachian Trail Trip. Date—July 16 — July 30.

Expedition No. 3—Adirondack Lakes Canoe Trip. Date—July 16 — July 30.

Expedition No. 4—Adirondack Mountaineering Trip—July 30 — August 13.

Expedition No. 5—Adirondack Lakes Canoe Trip—July 30 — August 13.

Expedition No. 6—Adirondack Lakes Canoe Trip—August 13 — August 27.

REGISTER

Register for any of the Explorer programs using the red registration card. Registration with a \$5.00 deposit will be accepted at the Council Office on or after February 15, 1960. The \$5.00 reservation fee is not refundable in the event of cancellation. Balance of fees are due at the Council Office on or before June 1, 1960.

BUS TRANSPORTATION

Round Trip bus transportation is available to all Explorers participating in any of the programs for the periods as indicated. Round trip fee is \$6.00, including the carrying of all personal equipment. Detailed bus information will be supplied at the time of registration.

General Information

CANCELLATIONS AND REFUNDS

Refunds of Camp Fees (exclusive of \$5.00 registration deposit) will be made only under the following conditions:

1. Due to dismissal from camp by the camp doctor for medical reasons only. Refund for unused portion of camp fee.
2. Written cancellation to the Council Office at least two weeks prior to the opening of the camp period.

ADVANCEMENT OPPORTUNITIES

Camping provides the best opportunity for Scout advancement. The camp program is planned to provide natural experience in the Scouting skills. Camp Staff members will assist Unit Leaders in skill training, as well as serving as Merit Badge Counselors in the out-of-door Merit Badges.

Unit Committees are invited to visit the camp to conduct their own Troop Board of Review. Every Scout should advance along the Eagle Trail while at camp.

RELIGIOUS SERVICES

Scouts are urged to attend religious services of their choice while at camp. Each camp has chapels for Protestant, Catholic and Jewish services. At each camp three resident chaplains conduct services and are available for guidance and consultation throughout the camping season.

HEALTH AND SAFETY

Nassau County Council Camps operate under New York State Health Department regulations. Camps are regularly inspected by the Health Department and our own Council Health and Safety Committee. Each Camper must present a Health Examination Certificate from his own physician to enter camp. This examination must be given before the Scout arrives at camp. A well equipped Health Lodge is maintained and staffed by a registered physician at each camp.

CAMPER INSURANCE

Campers in all of the Council operated Camping Programs will be covered by Medical Reimbursement Policy as a part of the camping fee.

ORDER OF THE ARROW

The Order of the Arrow is a National Brotherhood of Honor Campers. Membership in this organization is an honor bestowed upon a Scout by members of his own Unit. Members are elected by the other members of his Troop at home, but inducted into the Lodge at summer camp. Order of the Arrow inductions will be held each camping period at both Onteora and Wauwepex.

SAVE YOUR MONEY FOR CAMP

If you are not saving for camp you can secure a Camp Savings book from your Scoutmaster. The Nassau County Council provides Camp Savings Books and Stamps to Units free of charge. You will enjoy camp more if you save part of the money yourself.

WHAT TO TAKE TO CAMP

Scouts attending either Camp Wauwepex or the Onteora Scout Reservation should take the following to camp:

1 Complete Summer Uniform
2 pr. Scout Shorts
V-Neck Shirt
Underwear
Socks (at least 3 pr.)
Shoes (2 pr.)
Rubbers
Poncho or Rain Coat
Swim Trunks

Scout Handbook
Pajamas
3 Blankets or a Sleeping Bag
Towels
Toilet Articles
Handkerchiefs
Sweater or Jacket
Flashlight

Having fun at camp is dependent a good deal upon being prepared for the weather. Remember it is cooler at camp than in town, especially at night. Also, be sure to have wet weather clothing, just in case.

You may also want to bring some of the following items:

Camera, Cook Kit, Knapsack, Fishing Equipment, Archery Equipment.

Fire arms or ammunition cannot be brought to camp. It is recommended that you do not bring portable radios to camp.

FOR ADDITIONAL INFORMATION CALL

**NASSAU COUNTY COUNCIL
BOY SCOUTS OF AMERICA**

**SHELTER ROCK ROAD
ROSLYN, NEW YORK**

TELEPHONE PIONEER 6-8282