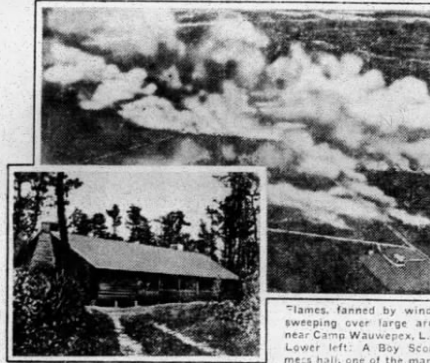


## Firemen Race Sixty Miles to Save Boy Scout Camp From Forest Blaze

Arrive Just as Flames Reach Property — Hundreds of  
CCC Workers, State Park Employees and Others  
Join in Successful Battle

One of the most remarkable examples of community cooperation and long distance aid in the annals of fire fighting occurred recently in quelling forest fires which threatened Camp Wauwepex, \$250,000 property of the Nassau County Boy Scouts, near Wading River, Long Island. Hundreds of acres of land covered by pines, underbrush and sage in this and other nearby sections were swept by the fire.

County Scout Camp Newcombe and spread eastward towards Camp Wauwepex. This was conquered about half a mile from the latter camp, after many hundred acres of forest lands had been burned over. Again scores of residents as well as Scouts and their officials made up the defending forces. The fire fighting was under difficult conditions, as water had to be brought great distances and the wind caused the flames



Upper photo courtesy Nassau Daily Review

Flames, fanned by winds sweeping over large area near Camp Wauwepex, L. I. Lower left: A Boy Scout mess hall, one of the many buildings saved by the army of fire fighters.

which persisted for several days. Due to the speedy work of the campers, Scout officials and others, and their foresight in calling for aid adequate to meet the emergency, the camp was saved.

The battle was fought not only by the group of sixty Scouts and their leaders, but by hundreds of CCC workers from nearby Camp Upton, State park employees, neighboring farmers and fire fighting units from the section, and was climaxed by a sixty-mile dash by firemen with five pieces of apparatus from Hempstead, Rockville Center and Freeport.

This long distance run of the firemen from Nassau County communities in the western section of the island to the camp in Suffolk County in the eastern section, is declared to be one of the most unusual on record. Nassau citizens, realizing that their own Boy Scout Camp in a sparsely settled location was threatened, felt that the distance should not stand in the way of needed service. Firemen at Mineola, Lakeville and Floral Park also made ready to send apparatus, but fortunately it was not needed.

The first of the series of fires was discovered early Saturday forenoon, April 27. Fanned by a northwest wind, the flames spread towards the camp from half a mile away. The Riverhead fire department, the Camp Upton CCC unit and the Nassau County Scout headquarters at Mineola were called by telephone. Assistance came soon from every hand and the fire fighters won their battle by early afternoon.

The following noonday, however, fire broke out in a section near the Queens

to spread rapidly. Sand and dirt as well as water were used.

Despite every precaution, fire broke out again next morning in the wooded area southeast of the camp. The alarm was again transmitted by the camp telephone, which was a very busy instrument during the emergency period. The flames were in an especially vicious mood on this third day. While a large body of the CCC men, Scouts, State Park employees and others responded, the Scout executives decided that if the flames got much nearer the buildings, all would be lost.

So by long distance telephone they telephoned Scout headquarters in Mineola, which in turn explained the emergency to the local city and town officials. Soon the group of five fire engines and trucks were on their way to Camp Wauwepex, sixty miles away.

They arrived just in time. The fire had already swept down over the hill at the side of the camp, burned several tent platforms, and was threatening the buildings. The Hempstead pumper was stationed down at the edge of the lake and the Rockville Center and Freeport pumpers acted as boosters along a 2,000-foot line of hose which directed water on the fire and on the buildings threatened by the flames. Thus the situation was soon under control, although the fire fighters were on hand for many more hours, guarding the grounds against another outbreak.

Camp Wauwepex is one of the largest and best equipped Scout camps in the state. It accommodates annually some 1,500 boys and Scout training officials, with activities there during the entire year.